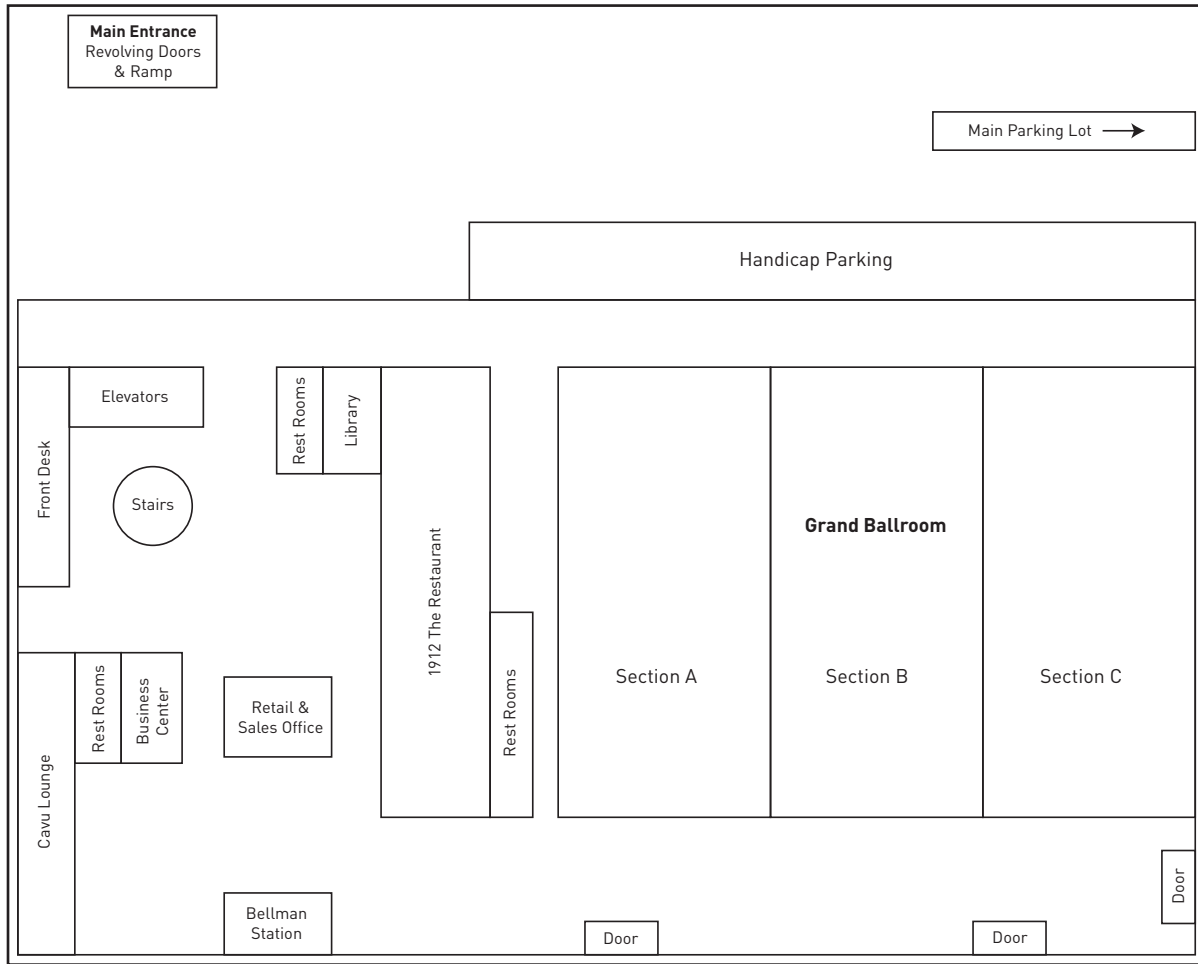
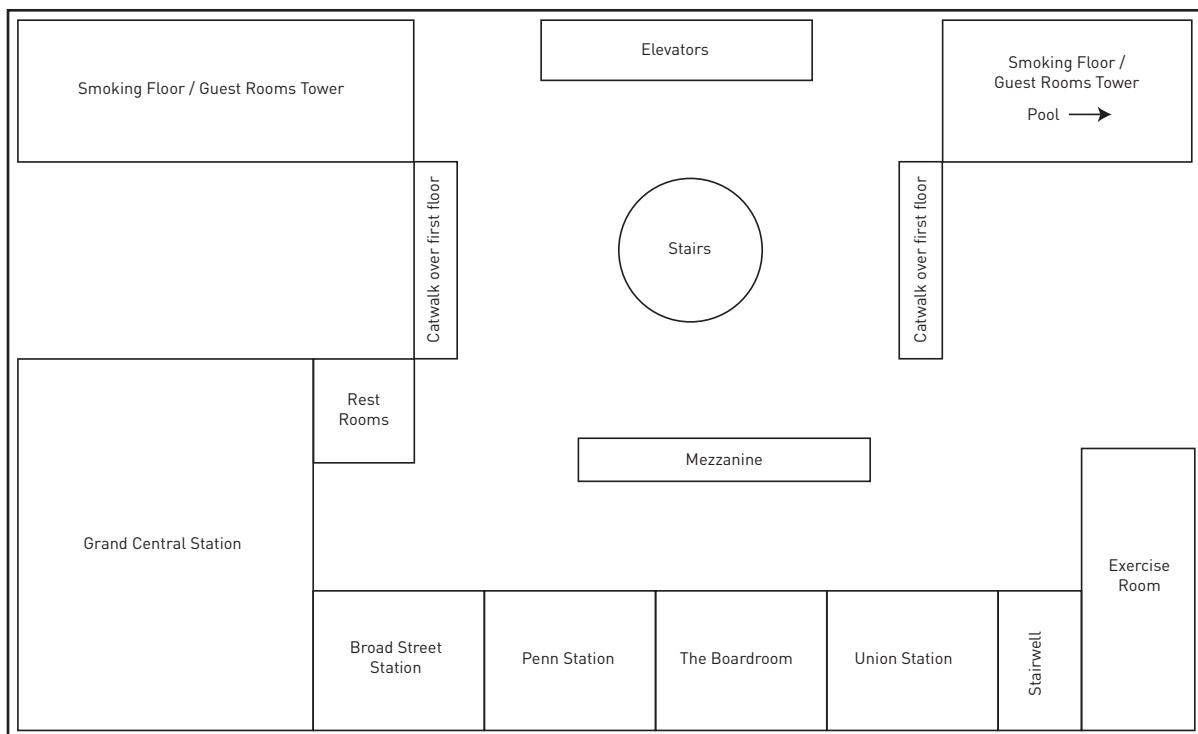


# Crowne Plaza Pensacola Grand Hotel

## GROUND FLOOR



## SECOND FLOOR

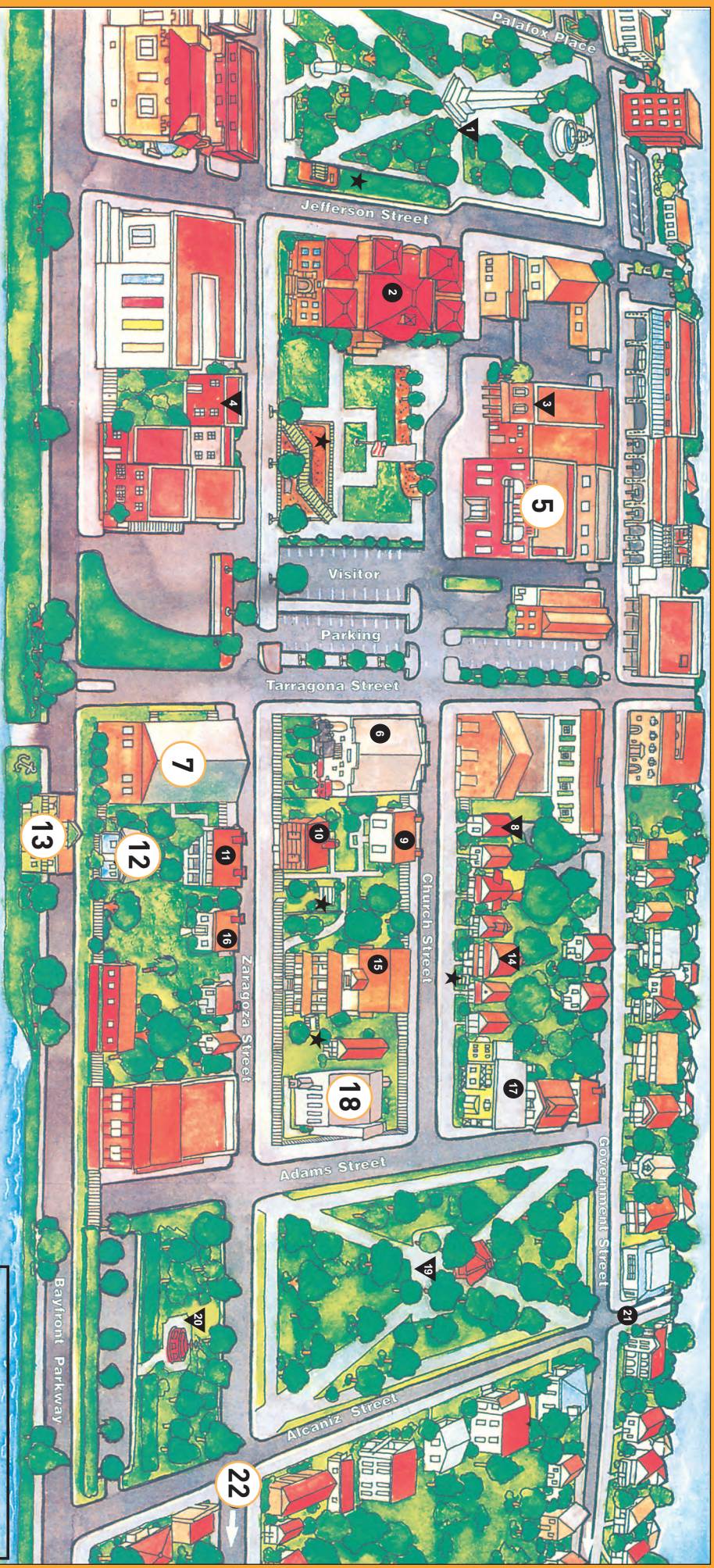


THE CROWNE PLAZA

# Pensacola, Florida



# Historic Pensacola Village



● Indicates Historic Village  
▼ Indicates Points of Interest

- 1 Plaza Ferdinand VII
- 2 T. T. Wentworth, Jr. Florida State Museum (1907)
- 3 Pensacola Historical Society Research Center/Beacon Building (1912)
- 4 Athona Building (1881)
- 5 J. Earle Bowden Building
- 6 Museum of Industry (1870)
- 7 Museum of Commerce (1890)
- 8 Coulson House (1890)
- 9 Lavalle House (1805)
- 10 Julie Cottage (1805)
- 11 Trivoli High House (Reconstructed 1976)
- 12 Walsh Building
- 13 UWF Public History Center
- 14 L&N Marine Terminal (1903)
- 15 Florida Public Archaeology Network
- 16 Old Christ Church Parish School House (1886) Institute for Innovative Community Learning
- 17 Lear-Rochelave House (1890)
- 18 Manuel Barrios Cottage (1888)
- 19 Dorr House (1871)
- 18 Old Christ Church (1832)
- 19 Seville Square
- 20 Fountain Park
- 21 Quina House (1821)
- 22 204 South Alcaniz Street. Pensacola Historic Preservation Society
- 23 Barkley House (1825)
- 24 410 South Florida Blanca Street.



★ Indicates Stops for the Colonial Archaeological Trail.

This trail is a project of West Florida Historic Preservation, Inc., the City of Pensacola, and the University of West Florida Archaeology Institute. Partial funding was provided by a grant from the Division of Historical Resources, Florida Department of State. The trail presents evidence of the first-ferries that existed on these grounds between the years 1752 and 1821. During this period, Spanish, British, and American soldiers occupied these structures. The trailside exhibits highlight features that were a part of the exciting fort construction, which includes kitchen stoves, buildings' trash pits, and wells.

Maps for a walking tour of the Colonial Archaeological Trail are available at the T.T. Wentworth, Jr. Florida State Museum and Trivoli High House information desks.