



# COLUMBIA RIVER

SHEET No. 4

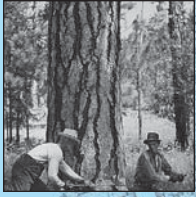
## GRIM'S ISLAND TO KALAMA

Scale 50000

Aids to Navigation corrected to 1885

Entered, June 1858, F. M. THORN, Superintendent,  
Verified, H. A. Colonna, Assistant in charge of Office.

PRICE 25 CENTS



# Currents of Change

Annual Meeting of the  
American Society for Environmental History  
and the  
National Council on Public History

10-14 March 2010

Hilton Portland & Executive Tower  
Portland, Oregon